

Network Video Receiver

Multi-language Quick Guide

English | 中文 | 簡中 | 日本語 | Français | Español | Deutsch | Português | Italiano



RX7101

This guide describes the basic functions of RX7101.

All detailed information is described in the user's manual.





Warning Before Install

- **Power off the Video Receiver as soon as it is found smoking or smelt unusual.**



Contact your distributor when such cases happen.

- **Keep the Video Receiver away from the water. If the Network Camera is wet, power off immediately.**

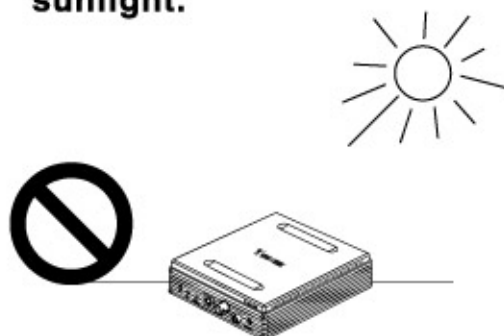


Contact your distributor when such cases happen.

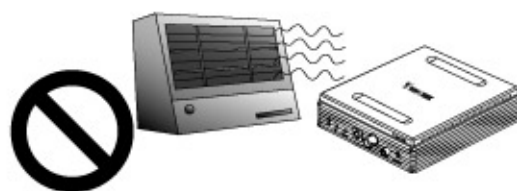
- **Do not place the Video Receiver around the heat sources, such as television or oven.**



- **Keep the Video Receiver away from the direct sunlight.**



- **Refer to your user's manual for the operating temperature.**



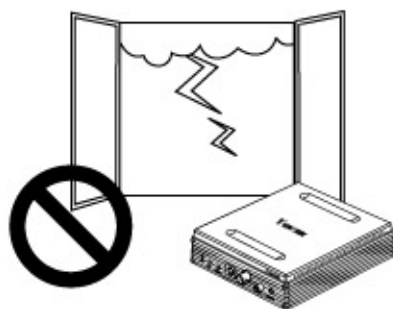
- **Do not place the Video Receiver in high humid environments.**



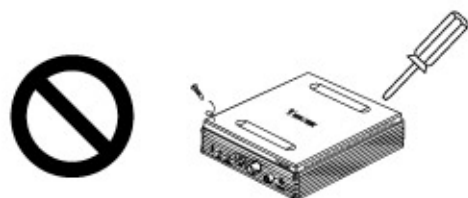
- Do not place the Video Receiver on unsteady surfaces.



- Do not touch the Video Receiver when it's lightning.



- Do not disassemble the Video Receiver.



- Do not insert any object into the Video Receiver, such as needles.



- Do not drop the Video Receiver.



1 Check Package Contents

● RX7101



● Power Adapter



● Software CD



● I/O Connector



● Quick Installation Guide

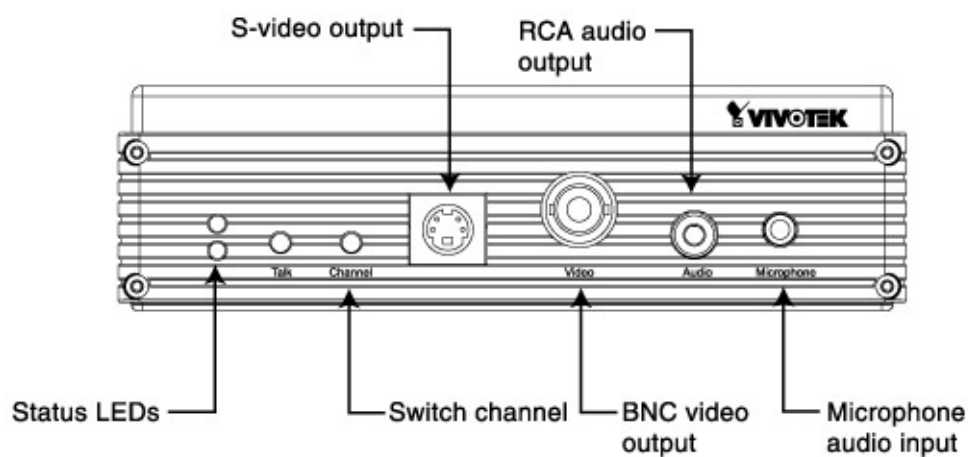


● Warranty Card

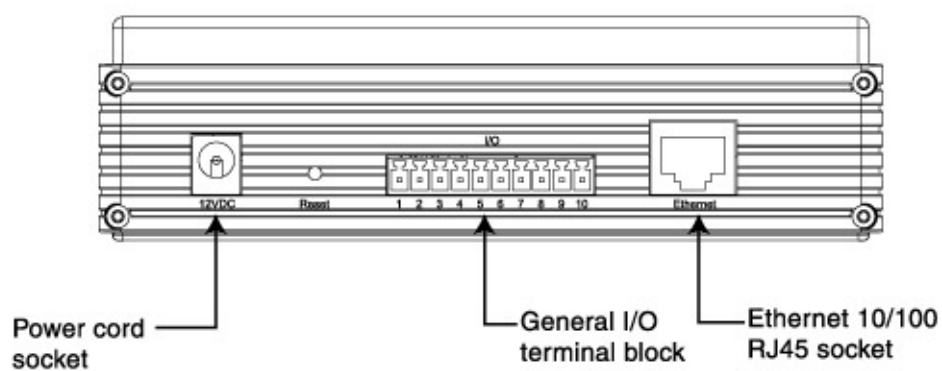


2 Physical Description

● Front Panel



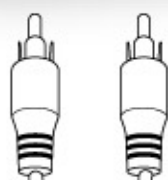
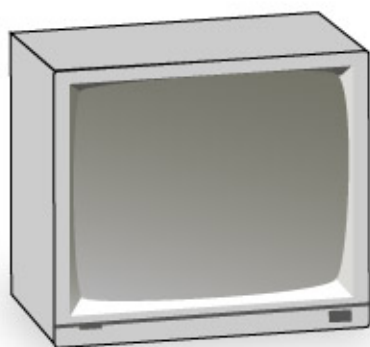
● Rear Panel



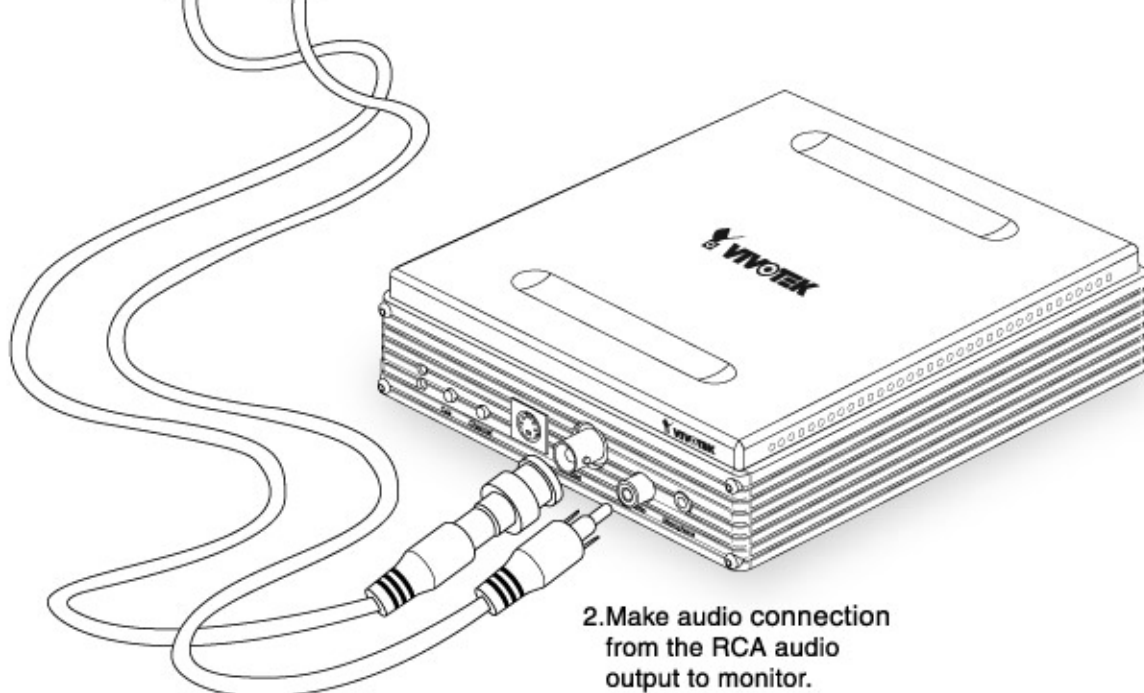
3

Make Connections

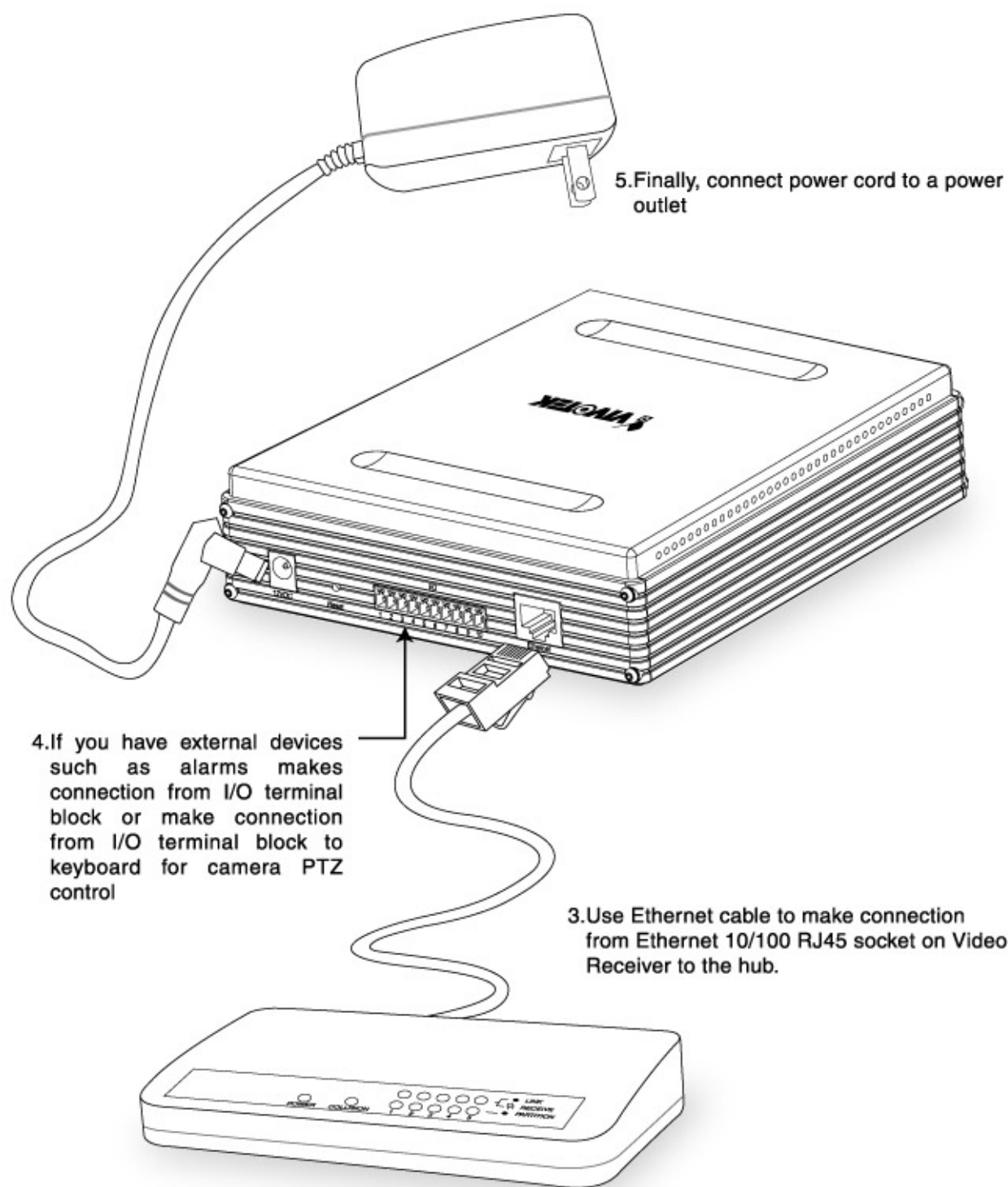
● Install the Video Receiver to an Ethernet Network



1. Make video connection from the BNC video output or s-video output to monitor.



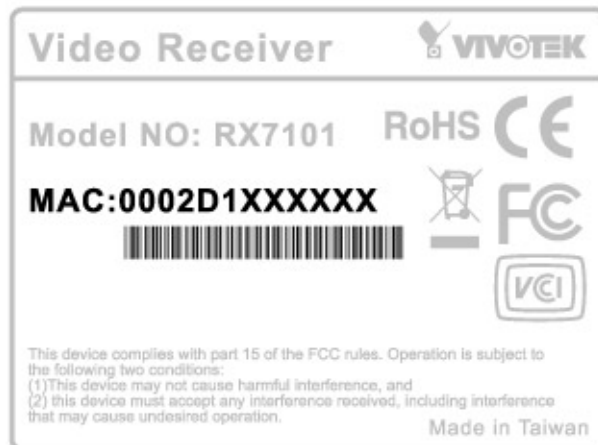
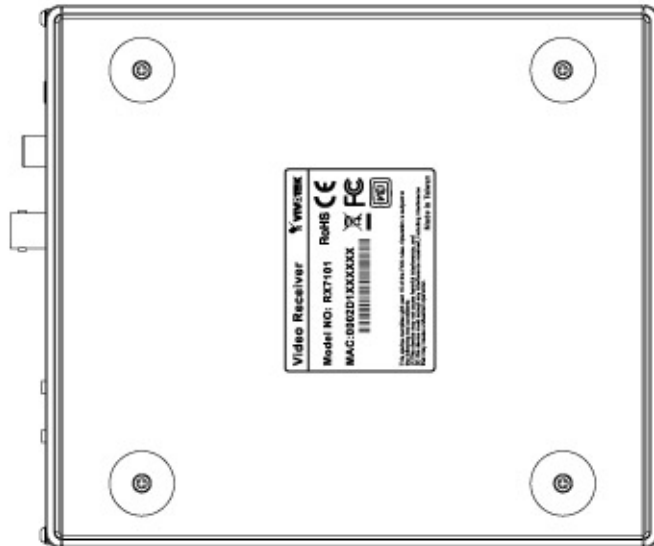
2. Make audio connection from the RCA audio output to monitor.



4

Assign IP Address

- A** Note the serial number from the label on the unit.

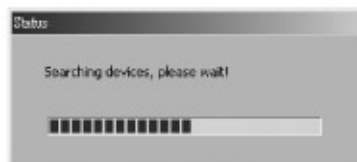


This serial number is same as Ethernet address,
for example: 0002D1100052=00-02-D1-00-00-12

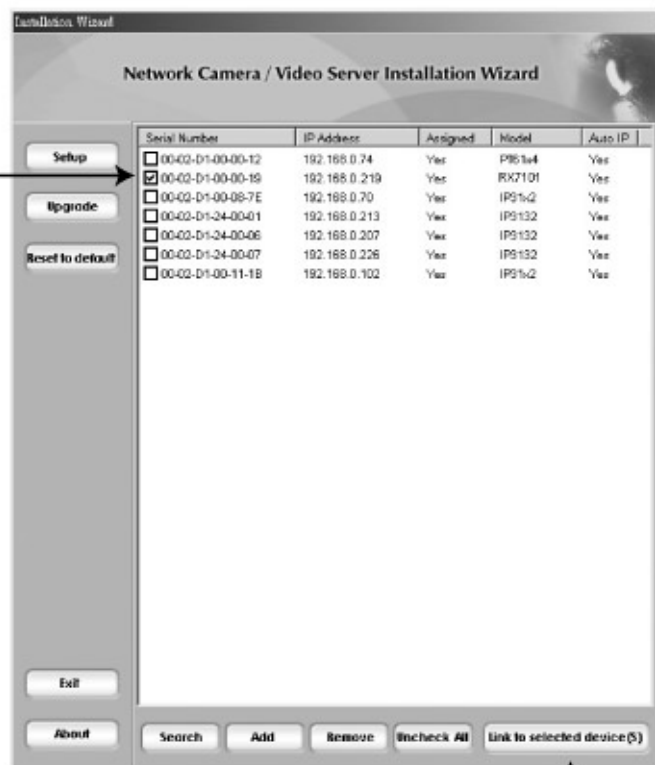
B Assign IP address

● Using Installer program

- 1.Run the "Installation Wizard" under the Software Utility directory from software CD.
- 2.The program will search the Vivotek Video Receivers, Video Servers or Network Cameras on the same LAN.



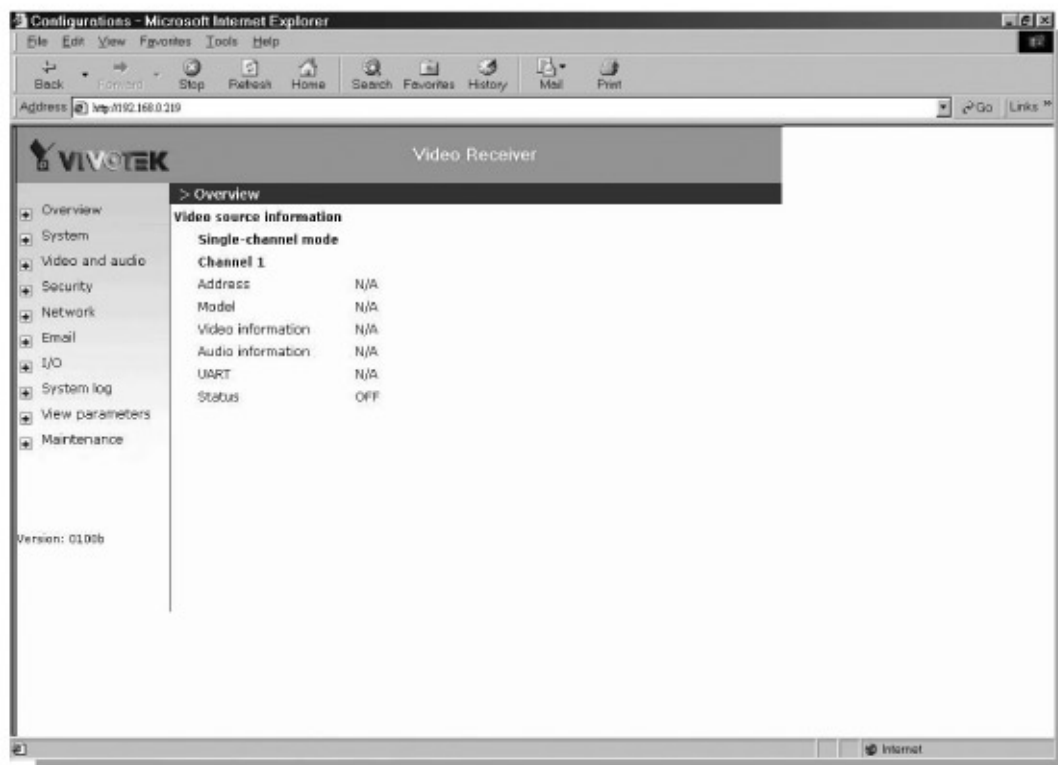
- 3.After searching, the main installer window will pop up. Click on serial number that matches the one you just noted from previous page.



- 4.Click "Link to selected device(s)" to connect the Internet Explorer to the Video Receiver.

5

The Internet Explorer Connects to the Video Receiver



For further setup, please check the user's manual on the software CD.